

D

**Montage-
anleitung**
Tagfahrlicht/
Positionslicht
Steuergerät

GB

**Mounting
instructions**
Daytime running
light/Position
light Control unit

F

**Instructions de
montage**
Feu diurne/
Feu de position
Calculateur

S

**Monterings-
anvisning**
Varselljus/
Positionsljus
Kontrollenhet

NL

**Montage-
handleiding**
Dagrijlicht/
Positie licht
Regeleenheid

E

**Instrucciones de
montaje**
Luz diurna/Luz
de posición
Unidad de control

I

**Instruzioni di mon-
taggio**
Luce per di marcia
diurna/Luce di
posizione Centralina

FIN

Asennusohje
Valojen
Päiväajovalo/
Sivuvalo
Ohjainlaite

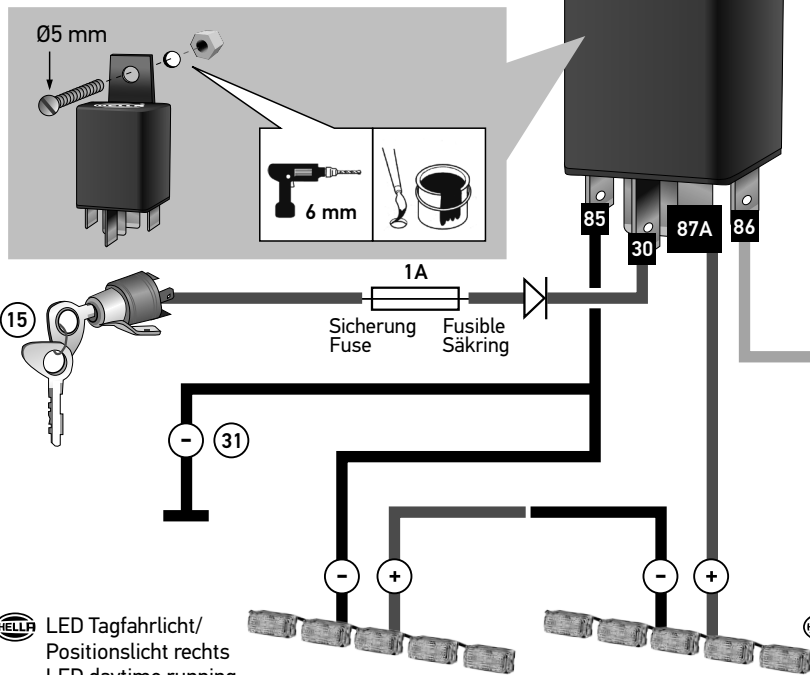
31 schwarz black noir svart

15 87a rot red rouge rød

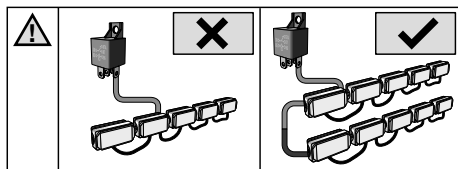
58 grau grey gris gra

Hella Bestellnr.
Hella Part. No.
Référence Hella
Hella best. nr.

24V: 8KA 959 186-911

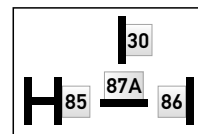


HELLA LED Tagfahrlicht/
Positionslicht rechts
LED daytime running
light/Position light right
Feu diurne LED/feu de
position droit
LED-varselljus/
positionsljus höger



HELLA LED Tagfahrlicht/
Positionslicht links
LED daytime running
light/Position light left
Feu diurne LED/feu de
position gauche
LED-varselljus/
positionsljus vänster

Steckerbelegung
Pin configuration
Configuration des bornes
Anslutningar



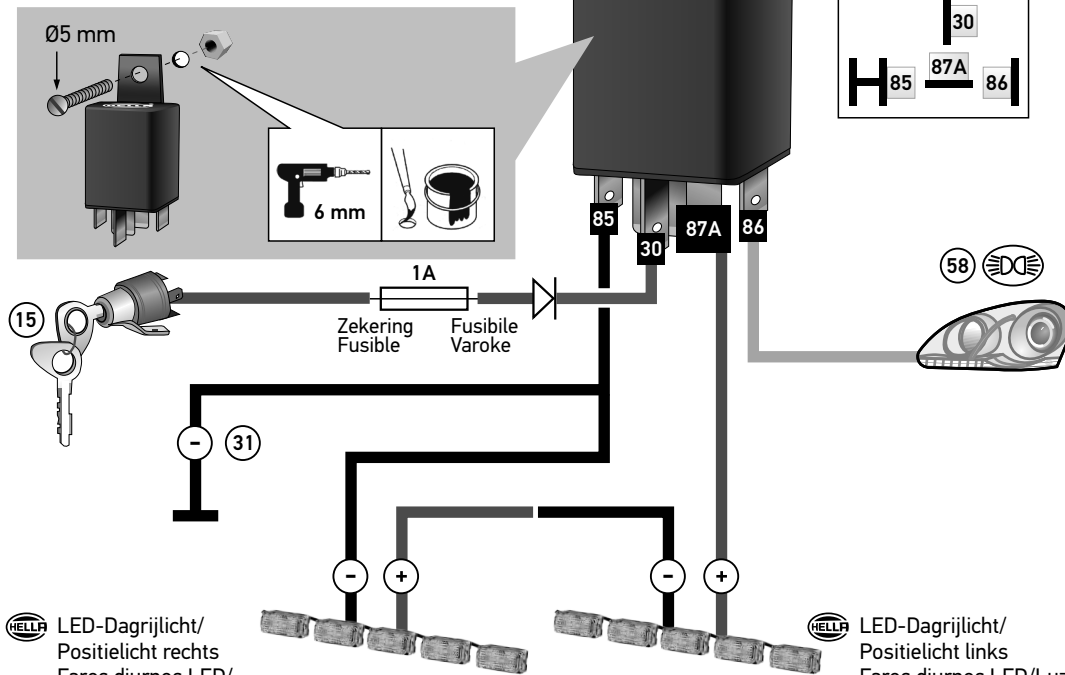
31 zwart negro nero musta

15 87a rood rojo rosso punainen

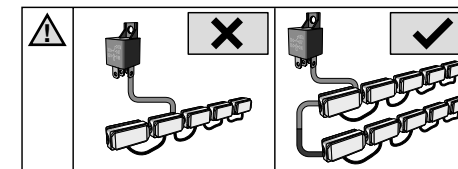
58 grijs gris grigio harmaa

Hella Betelnr.
Nº. De pedido Hella
No d'ordine Hella
Hella - nro

24V: 8KA 959 186-911



HELLA LED-Dagrijlicht/
Positielicht rechts
Faros diurnos LED/
Luz de posición derecha
Luci di marcia diurna a
LED/Luce di posizione destra
LED-Päiväajovalo/
Sivuvalo oikea



HELLA LED-Dagrijlicht/
Positielicht links
Faros diurnos LED/Luz
de posición izquierda
Luci di marcia diurna a
LED/Luce di posizione-
sinistra
LED-Päiväajovalo/
Sivuvalo vasen

Stekkeropstelling
Disposición de clavijas
Disposizione attachi
Navoitus

