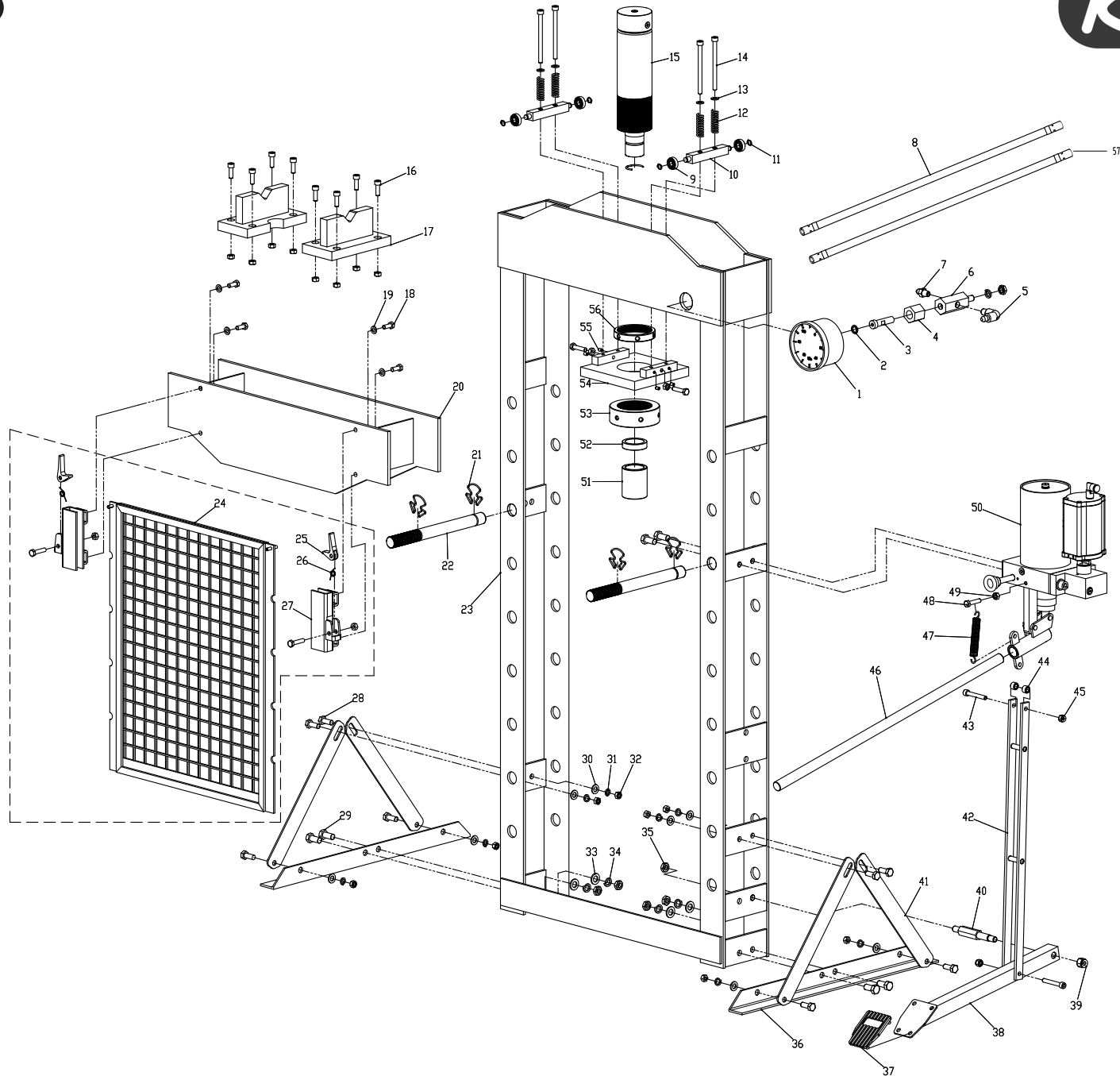


Art. 160.1150

KS TOOLS®



**Art. 160.1150**

Part. No	Art.-Nr.	Beschreibung	Description	Menge Qty.
1	160.1150-R001P	Manometer	Pressure gage	1
2	160.1150-R002P	Unterlegscheibe	Washer	1
3	160.1150-R003P	Adapter für Manometer	Pressure gage connector	1
4	160.1150-R004P	Mutter	Nut	1
5	160.1150-R005P	90° Winkeladapter	Elbow connection	2
6	160.1150-R006P	Adapter	Hexagon coupling	1
7	160.1150-R007P	Winkelanschluss	Angle coupling	2
8	160.1150-R008P	Schlauch	Hose	1
9	160.1150-R009P	Kugellager	Deep groove ball bearing	4
10	160.1150-R010P	Schlitten	Bloom	2
11	160.1150-R011P	Sicherungsring	Gasket ring	4
12	160.1150-R012P	Feder	Pressure spring	4
13	160.1150-R013P	Unterlegscheibe	Washer	8
14	160.1150-R014P	Schraube	Screw	4
15	160.1150-R015P	Hydraulikkolben	Cylinder assembly	1
16	160.1150-R016P	Schraube	Screw	8
17	160.1150-R017P	Aufnahme	Support plate	2
18	160.1150-R018P	Bolzen	Bolt	5
19	160.1150-R019P	Unterlegscheibe	Washer	4
20	160.1150-R020P	Teleskoparm	Movable beam	1
21	160.1150-R021P	Sicherrungsring	Locating circlip	4
22	160.1150-R022P	Bolzen	Pin	2
23	160.1150-R023P	Rahmen	Frame	1
24	160.1150-R024P	Sicherheitsgitter	Protecting net	1
25	160.1150-R025P	Hebel	shifting fork	2
26	160.1150-R026P	Feder	Spring	2
27	160.1150-R027P	Halter für Sicherheitsgitter	Guide rail component	2
28	160.1150-R028P	Bolzen	Bolt	8
29	160.1150-R029P	Bolzen	Bolt	6

Part. No	Art.-Nr.	Beschreibung	Description	Menge Qty.
30	160.1150-R030P	Unterlegscheibe	Washer	8
31	160.1150-R031P	Unterlegscheibe	Washer	8
32	160.1150-R032P	Bolzen	Bolt	8
33	160.1150-R033P	Unterlegscheibe	Washer	11
34	160.1150-R034P	Unterlegscheibe	Washer	8
35	160.1150-R035P	Mutter	Nut	6
36	160.1150-R036P	Standfussplatte	Foot base	2
37	160.1150-R037P	Gummiteller	Rubber pad	1
38	160.1150-R038P	Fusspedal	Foot pedal	1
39	160.1150-R039P	Mutter	Nut	1
40	160.1150-R040P	Verbindungsbolzen	Foot holding rod	1
41	160.1150-R041P	Standstrebe	Pull rod	4
42	160.1150-R042P	Verbindungsstrebe für Fußpedal	Long connecting rod	1
43	160.1150-R043P	Bolzen	Bolt	2
44	160.1150-R044P	Lager für vordere Rolle	Bushing	2
45	160.1150-R045P	Mutter	Nut	4
46	160.1150-R046P	Betätigungsstange	Handle	1
47	160.1150-R047P	Feder	Spring	1
48	160.1150-R048P	Bolzen	Bolt	4
49	160.1150-R049P	Mutter	Nut	11
50	160.1150-R050P	Hydraulikeinheit	Hydraulic power unit	1
51	160.1150-R051P	Schutzhülse	Piston rod sleeve	1
52	160.1150-R052P	Verstärkungsring	Reinforcing ring	1
53	160.1150-R053P	Befestigungsmutter	Nut A	1
54	160.1150-R054P	Halterung für Hydraulikkolben	Oil pump positioning plate	1
55	160.1150-R055P	Schraube	Screw	4
56	160.1150-R056P	Befestigungsmutter	Nut B	1
57	160.1150-R057P	Schlauch	Hose assembly	1