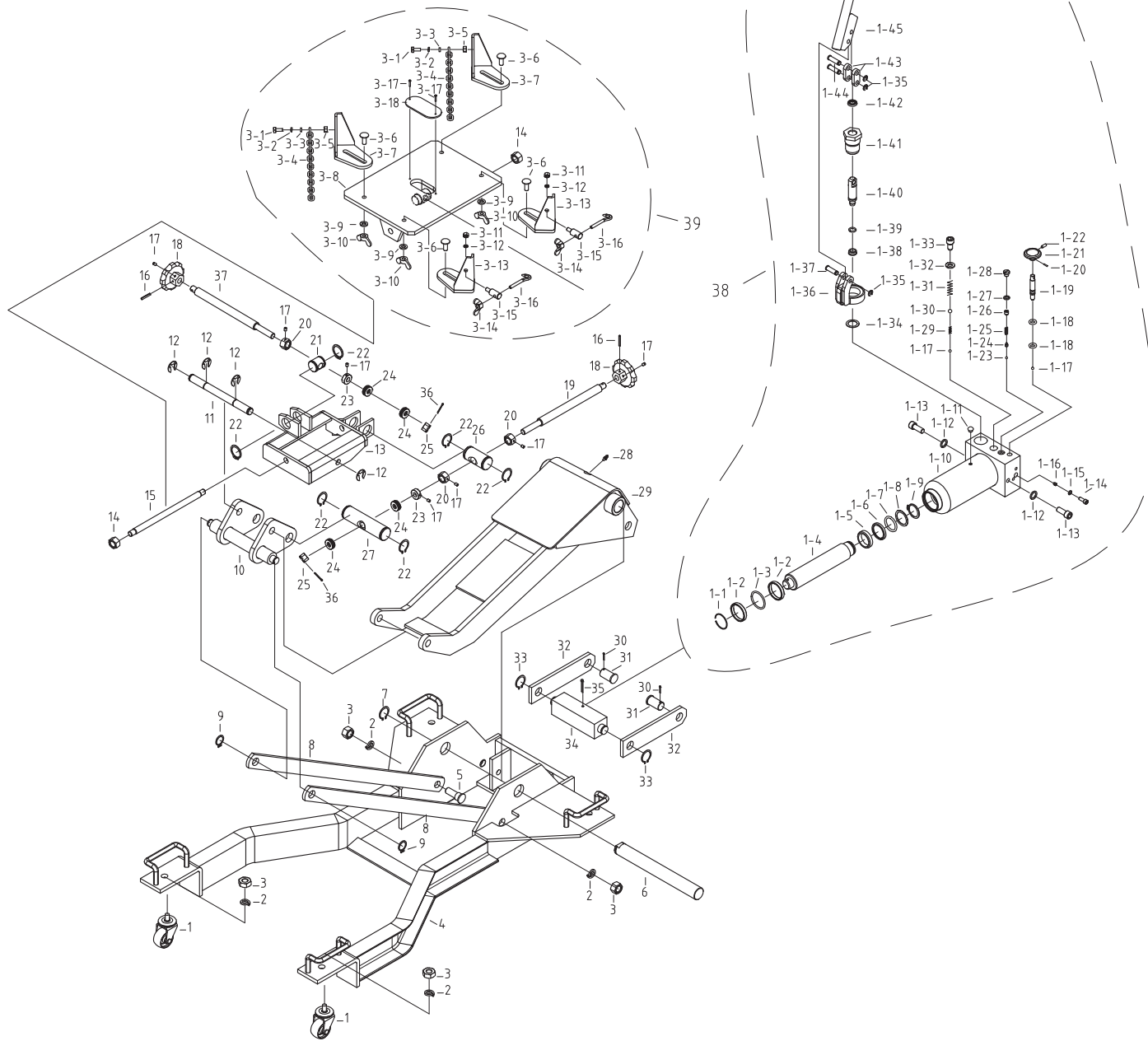


Art. 160.1335



Art. 160.1335


Part. No	Art.-Nr.	Beschreibung	Description	Menge Qty.
1	160.1335-R001P	Lenkrolle	Caster Assembly	4
2	160.1335-R002P	Unterlegscheibe	Washer	6
3	160.1335-R003P	Mutter M16	Nut M16	2
4	160.1335-R004P	Rahmen	Frame Assembly	1
5	160.1335-R005P	Bolzen	Bolt	2
6	160.1335-R006P	Hubarmachse	Lift Arm Pivot	1
7	160.1335-R007P	Sicherungsring	Retainer Ring	1
8	160.1335-R008P	Verbindungsstange	Link Rod	2
9	160.1335-R009P	Sicherungsring	Retainer Ring	2
10	160.1335-R010P	Halteaufnahme	Saddle Assembly	1
11	160.1335-R011P	Bolzen	Pin	1
12	160.1335-R012P	Sicherungsring	Retainer Ring	4
13	160.1335-R013P	Halte für Aufnahmetisch	Saddle Support Assy.	1
14	160.1335-R014P	Mutter	Nut	2
15	160.1335-R015P	Achse	Axle	1
16	160.1335-R016P	Splint	Pin	2
17	160.1335-R017P	Bolzen	Bolt	9
18	160.1335-R018P	Einstellrad	HandWheel Assembly	2
19	160.1335-R019P	Spindel	Screw Rod	1
20	160.1335-R020P	Einstellmutter	Adjusting Nut	3
21	160.1335-R021P	Bolzen	Pin	1
22	160.1335-R022P	Sicherungsring	Retainer Ring	6
23	160.1335-R023P	Mutter	Nut	2
24	160.1335-R024P	Kugellager	Bearings	1
25	160.1335-R025P	Kronenmutter	Castle Nut	2
26	160.1335-R026P	Bolzen	Pin	1
27	160.1335-R027P	Bolzen	Pin	1
28	160.1335-R028P	Schmiernippel	Grease Fitting	1
29	160.1335-R029P	Hubarm	Lift Arm Assembly	1
30	160.1335-R030P	Splint	Pin	2
31	160.1335-R031P	Bolzen	Pin	2
32	160.1335-R032P	Verbindungsstange	Link Rod	2
33	160.1335-R033P	Sicherungsring	Retainer Ring	1
34	160.1335-R034P	Verbindungsstange	Link Rod	1
35	160.1335-R035P	Splint	Pin	1
36	160.1335-R036P	Splint	Cotter pin	4
37	160.1335-R037P	Spindel	Screw Rod	1
38	160.1335-R038P	Hydraulikeinheit	Complete Hydraulic Power Unit	1

Part. No	Art.-Nr.	Beschreibung	Description	Menge Qty.
39	160.1335-R039P	Aufnahmetisch komplet	Complete Saddle Assembly	1
1-1	160.1335-R040P	Ring	Ring	1
1-10	160.1335-R041P	Gehäuse für Hydraulikeinheit	Power Unit Assy.	1
1-11	160.1335-R042P	Öl Einfüllschraube	Oil Plug	1
1-12	160.1335-R043P	Unterlegscheibe	Washer	2
1-13	160.1335-R044P	Bolzen	Bolt	2
1-14	160.1335-R045P	Bolzen	Bolt	1
1-15	160.1335-R046P	Unterlegscheibe	Washer	1
1-16	160.1335-R047P	Drosselventil	Throttle Valve	1
1-17	160.1335-R048P	Stahlkugel	Steel Ball	2
1-18	160.1335-R049P	O-Ring	O-Ring	2
1-19	160.1335-R050P	Ablassventilbolzen	Release Valve Shaft	1
1-2	160.1335-R051P	Ring	Ring	2
1-20	160.1335-R052P	Splint	Pin	1
1-21	160.1335-R053P	Ablassrad	Release Knob	1
1-22	160.1335-R054P	Bolzen	Bolt	2
1-23	160.1335-R055P	Stahlkugel	Steel Ball	2
1-24	160.1335-R056P	Ventilsitz	Ball Valve Base	1
1-25	160.1335-R057P	Feder	Spring	1
1-26	160.1335-R058P	Bolzen	Bolt	1
1-27	160.1335-R059P	Dichtungsring	Seal Washer	1
1-28	160.1335-R060P	Bolzen	Bolt	1
1-29	160.1335-R061P	Hochdruckfeder	Low Pressure Spring	1
1-3	160.1335-R062P	O-Ring	O-Ring	1
1-30	160.1335-R063P	Stahlkugel	Steel Ball	1
1-31	160.1335-R064P	Niederdruckfeder	High Pressure Spring	1
1-32	160.1335-R065P	Unterlegscheibe	Washer	1
1-33	160.1335-R066P	Bolzen	Bolt	1
1-34	160.1335-R067P	Unterlegscheibe	Washer	1
1-35	160.1335-R068P	Sicherungsring	Retainer Ring	3
1-36	160.1335-R069P	Pumphebelaufnahme	Link Rod Base	2
1-37	160.1335-R070P	Bolzen	Pin	1
1-38	160.1335-R071P	Y-Ring	Y- Ring	1
1-39	160.1335-R072P	O-Ring	O-Ring	1
1-4	160.1335-R073P	Hubkolben	Piston Rod	1
1-40	160.1335-R074P	Pumpkolben	Pump Piston	1
1-41	160.1335-R075P	Pumpgehäuse	Pump Housing	1
1-42	160.1335-R076P	Einstellwelle	Adjusting shaft	1

Art. 160.1335

Part. No	Art.-Nr.	Beschreibung	Description	Menge Qty.
1-43	160.1335-R077P	Pumpgestänge	Adjusting seat	2
1-44	160.1335-R078P	Sicherungsring	Retaining Ring	2
1-45	160.1335-R079P	Pumpstange	Handle Assembly	1
1-46	160.1335-R080P	Handgriff für Pumpstange	Handle sleeve	1
1-5	160.1335-R081P	Kolbenring	Piston Ring	1
1-6	160.1335-R082P	U-Ring	U-Cup Seal	1
1-7	160.1335-R083P	O-Ring	O-Ring	1
1-8	160.1335-R084P	Unterlegscheibe	Washer	1
1-9	160.1335-R085P	Sicherungsring	Retainer Ring	1
3-1	160.1335-R086P	Bolzen	Bolt	2
3-10	160.1335-R087P	Mutter	Nut	4
3-11	160.1335-R088P	Mutter	Nut	2
3-12	160.1335-R089P	Unterlegscheibe	Washer	2
3-13	160.1335-R090P	Aufnahmepunkt	Finger	2
3-14	160.1335-R091P	Mutter	Nut	2
3-15	160.1335-R092P	Bolzen	Bolt	2
3-16	160.1335-R093P	Hacken	Hook	2
3-17	160.1335-R094P	Bolzen	Bolt	2
3-18	160.1335-R095P	Abdeckung	Plate	1
3-2	160.1335-R096P	Unterlegscheibe	Washer	2
3-3	160.1335-R097P	Unterlegscheibe	Washer	2
3-4	160.1335-R098P	Kette	Chain	2
3-5	160.1335-R099P	Mutter	Nut	2
3-6	160.1335-R100P	Bolzen	Bolt	4
3-7	160.1335-R101P	Aufnahmepunkt	Finger	2
3-8	160.1335-R102P	Aufnahmetisch	Saddle Plate	1
3-9	160.1335-R103P	Unterlegscheibe	Washer	4