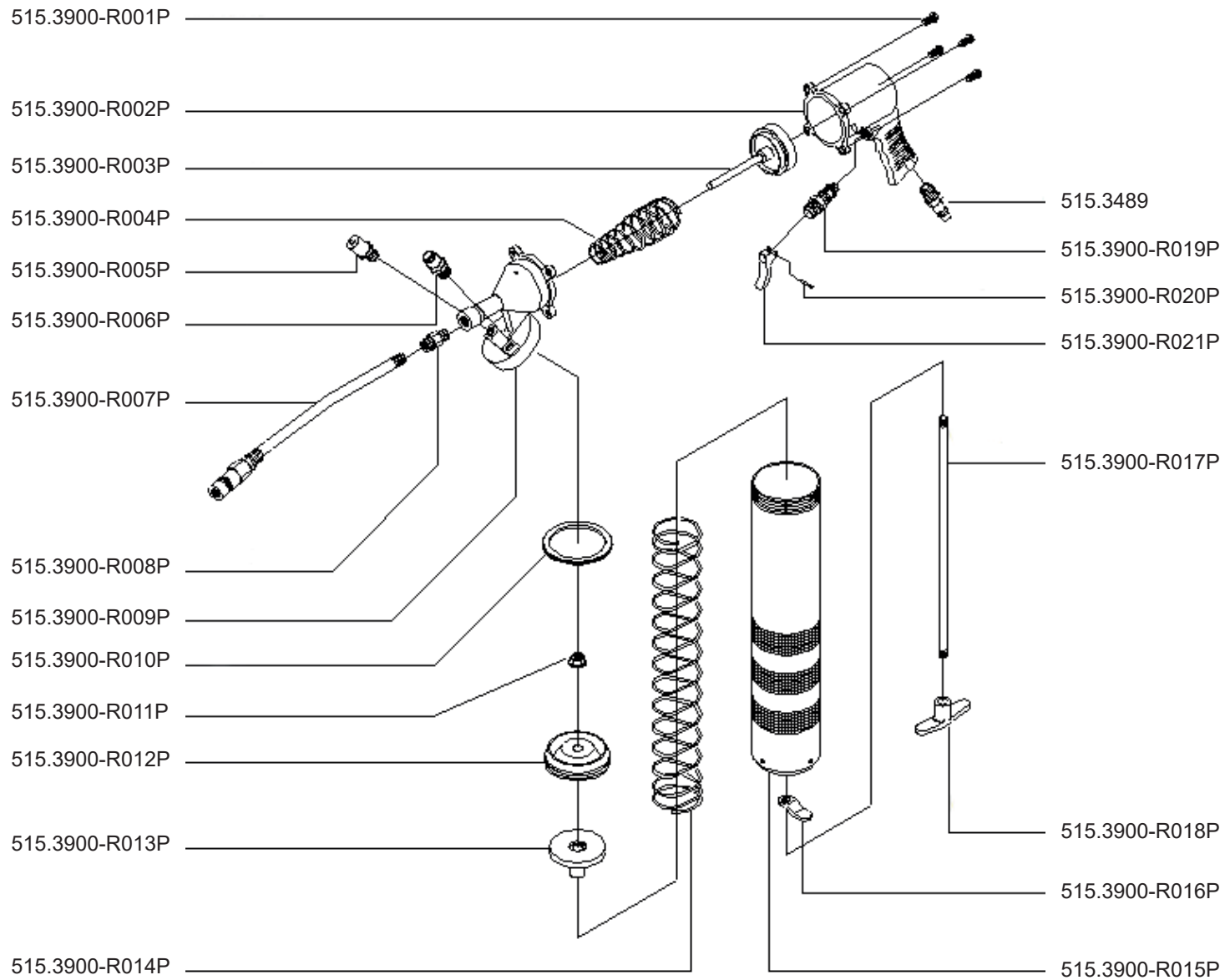


Art. 515.3900



Art. 515.3900

Art.-Nr.	Description	Beschreibung	Menge Qty.
515.3900-R001P	Housing screw	Gehäuseschraube	4
515.3900-R002P	Rear housing	Hinteres Gehäuse	1
515.3900-R003P	Piston	Kolben	1
515.3900-R004P	Piston spring	Kolbenfeder	1
515.3900-R005P	Filler plug	Einfüllstutzen	1
515.3900-R006P	Air ventilation valve	Entlüftungsventil	1
515.3900-R007P	Flexible hose	Flexibler Schlauch	1
515.3900-R008P	Adapter for hose	Einschraubadapter für Schlauch	1
515.3900-R009P	Front housing	Vorderes Gehäuse	1
515.3900-R010P	Gasket for cartridge tube	Dichtung für Kartuschenrohr	1
515.3900-R011P	Nut for piston rod	Mutter für Schubstange	1

Art.-Nr.	Description	Beschreibung	Menge Qty.
515.3900-R012P	Rubber plunger	Gummischubteller	1
515.3900-R013P	Thrust plate	Schubteller	1
515.3900-R014P	Cartridge tube spring	Kartuschenrohrfeder	1
515.3900-R015P	Cartridge tube	Kartuschenrohr	1
515.3900-R016P	Blocking plate	Blockierhebel	1
515.3900-R017P	Piston rod	Schubstange	1
515.3900-R018P	Handle for piston rod	Griff für Schubstange	1
515.3900-R019P	Valve	Ventil	1
515.3900-R020P	Spring pin for trigger	Splint für Abzug	1
515.3900-R021P	Trigger	Abzug	1
515.3489	Air inlet connector, male thread, 1/4"	Stecknippel m.Außengew.10x-13mm	1