



INSTALLATION MANUAL

C-3550 Arnott New Coil Spring Conversion Kit Mercedes-Benz CLS-Class (W218)



Engineered to Ride, Built to Last[®]

CONGRATULATIONS ON YOUR PURCHASE OF AN ARNOTT® SUSPENSION PRODUCT

WE AT ARNOTT LLC ARE PROUD TO OFFER A HIGH QUALITY PRODUCT WITH ALL THE TECHNICAL SUPPORT YOU NEED. THANK YOU FOR YOUR CONFIDENCE IN US AND OUR PRODUCT.

Proper installation is essential to experience and appreciate the benefits of this system. Please take a moment to review these installation instructions before you begin to install these components on your vehicle. The removal and installation of air suspension products should only be performed by a fully qualified and certified automotive professional.

It is equally important to be aware of all necessary safety measures while installing your new Air Suspension System. This includes proper lifting and immobilizing of the vehicle and isolation of any stored energy to prevent personal injury or property damage.

GENERAL INFORMATION

Reading this manual signifies your agreement to the terms of the general release, waiver of liability, and hold harmless agreement, the full text of which is available at www.arnottsuspension.com and www.arnotteurope.com.



WARNING:

The air suspension system is under pressure (up to 10 bar, or 150 lbf/in). Verify pressure has been relieved and disconnect power to the air suspension system prior to disassembly. Do not allow dirt or grease to enter the system. Always wear standard hand, ear, and eye protection when servicing the air suspension system.

- Not to be stored below 5°F (-15°C) and above 122°F (50°C).
- Avoid damage to air lines and cables.
- Removal and installation is only to be performed by fully qualified personnel.
- Use car manufacturer's diagnostic software.

CAUTION:

Damage to the vehicle and air suspension system can be incurred if work is carried out in a manner other than specified in the instructions or in a different sequence.

To avoid the possibility of short circuits while working with electric components, consult your owner's manual on how to disconnect your battery.

Consult your vehicle owner's manual, service manual, or car dealer for the correct jacking points on your vehicle and for additional care, safety and maintenance instructions. Under no circumstances should any work be completed underneath the vehicle if it is not adequately supported, as serious injuries and death can occur.

For vehicles with a "Closed Air Supply System," replacement of components requires proper adherence to procedures set forth within OE servicing literature. Failure to comply with the OE prescribed procedures can result in component damage and/or failure.

A 4-WHEEL ALIGNMENT IS RECOMMENDED AFTER INSTALLATION

FRONT AIR STRUT REMOVAL

1. Set the steering to straight ahead.
2. Safely raise the vehicle according to the manufacturer's instructions.
3. Deflate and disable the air suspension system according to the manufacturer's instructions.
4. Remove the front wheels. (Figure 1)



FIGURE 1

5. Loosen and remove the air line fitting from the top of the strut. (Figures 2, 3)



FIGURE 2

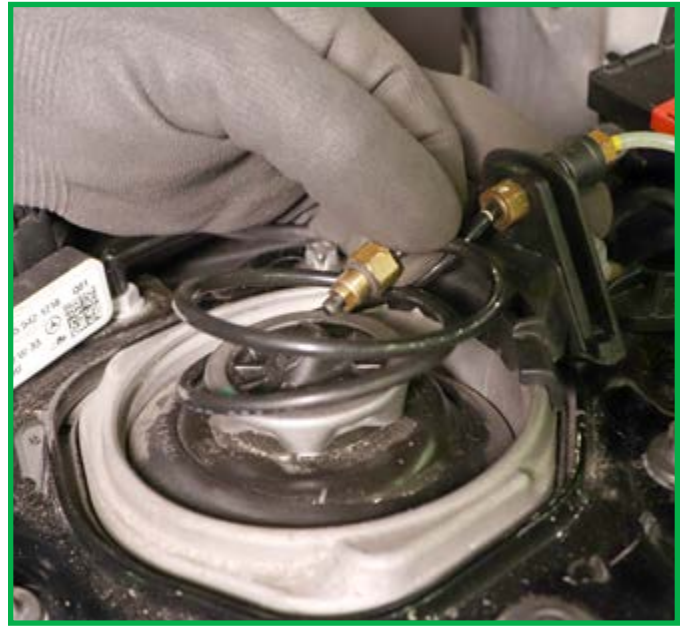


FIGURE 3

6. Loosen and remove the three (3) top mounting bolts. (Figures 4, 5)



FIGURE 4



FIGURE 5

7. Disconnect the electrical connection on the bottom mount of the strut. (Figure 6)



FIGURE 6

8. Unclip and unroute electrical and brake lines from the strut wire mounting bracket. (Figures 7, 8, 9)



FIGURE 7



FIGURE 8



FIGURE 9

9. Remove the strut wire mounting bracket. This bracket will be reused for installation. (Figures 10, 11, 12)

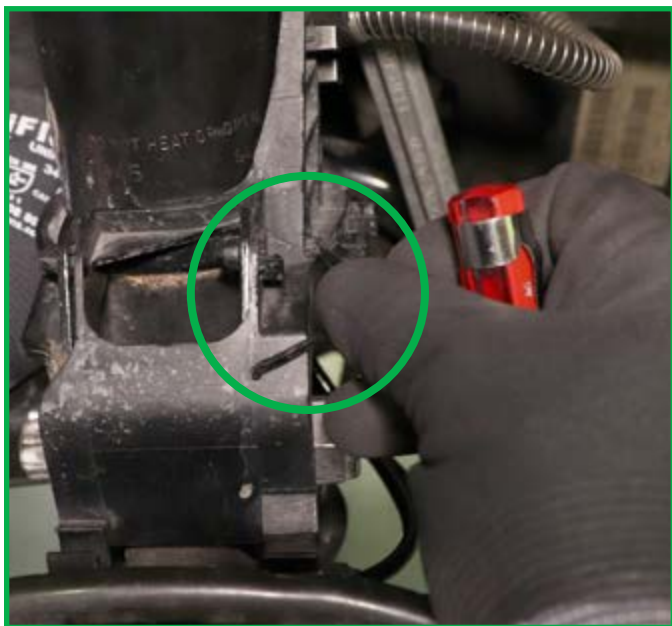


FIGURE 10



FIGURE 11



FIGURE 12

10. Remove the sway arm link nut and disconnect the sway arm from the strut. (Figures 13, 14)



FIGURE 13



FIGURE 14

11. Remove the two (2) strut bottom mount bolts. (Figures 15, 16, 17)



FIGURE 15



FIGURE 16



FIGURE 17

12. Remove the air strut from the vehicle. (Figure 18)



FIGURE 18

13. Front air strut removal complete.

FRONT COILOVER STRUT INSTALLATION

1. Install the plastic bracket removed from the OEM strut. (Figure 19)



FIGURE 19

2. Position the coil strut into the vehicle. Ensure that the wires and brake lines are routed to the correct side of the strut. (Figure 20)



FIGURE 20

3. Install the three (3) new included top mount nuts. (Figure 21)



FIGURE 21

4. Install the lower strut mount bolts. (Figure 22)



FIGURE 22

5. Connect the sway bar link and install the nut. (Figure 23)



FIGURE 23

6. Seal off and secure in a suitable location the air lines and strut electrical connectors.
7. Tighten all nuts and bolts to the manufacturer's specifications.
8. Reinstall the wheels and tighten to manufacturer's specifications.
9. Front coil strut installation complete.

REAR AIR SPRING AND SHOCK REMOVAL

1. Ensure the vehicle is properly raised according to the manufacturer's instructions.
2. Ensure the air suspension is deflated and deactivated according to the manufacturer's instructions.
3. Remove the rear wheels. (Figure 24)



FIGURE 24

4. Disconnect the air line from the air spring. (Figure 25)



FIGURE 25

5. Disconnect the electrical connector from the shock solenoid. (Figure 26)



FIGURE 26

6. Remove the lower shock mount bolt. (Figure 27)



FIGURE 27

7. Remove necessary trim inside the luggage compartment to access the upper shock mount. (Figure 28)



FIGURE 28

8. Remove the upper shock mount nuts. (Figure 29)



FIGURE 29

9. Remove the shock from the vehicle. (Figure 30)



FIGURE 30

10. Remove the air spring from the vehicle. (Figure 31)



FIGURE 31

11. Rear air spring and shock removal complete.

REAR COIL SPRING AND SHOCK INSTALLATION

1. Remove the lower sway bar link bolt. (Figure 32)



FIGURE 32

2. Remove the spring arm to wheel knuckle bolt. (Figure 33)



FIGURE 33

3. Loosen the spring arm to subframe bolt just enough to allow the spring arm to be repositioned. (Figures 34, 35)



FIGURE 34



FIGURE 35

4. Remove the retaining clip from the upper spring seat mount stud. It will not be used. Ensure the isolator pad remains. Re-seat the pad as necessary. (Figures 36, 37)

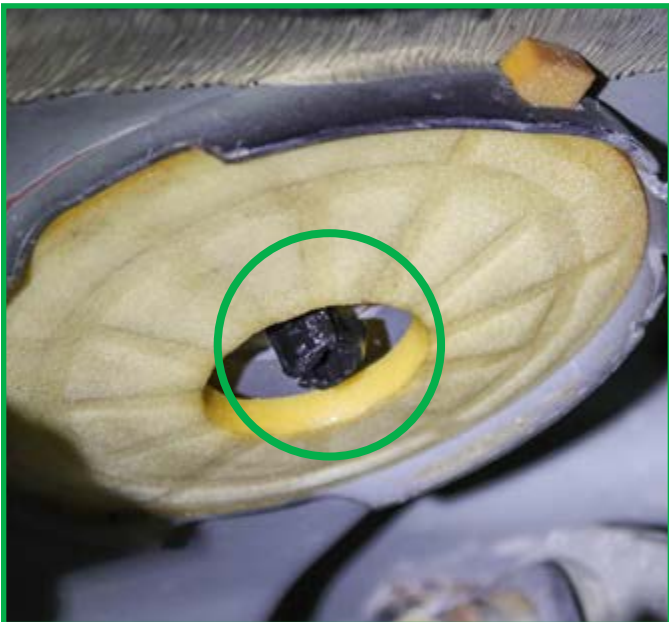


FIGURE 36

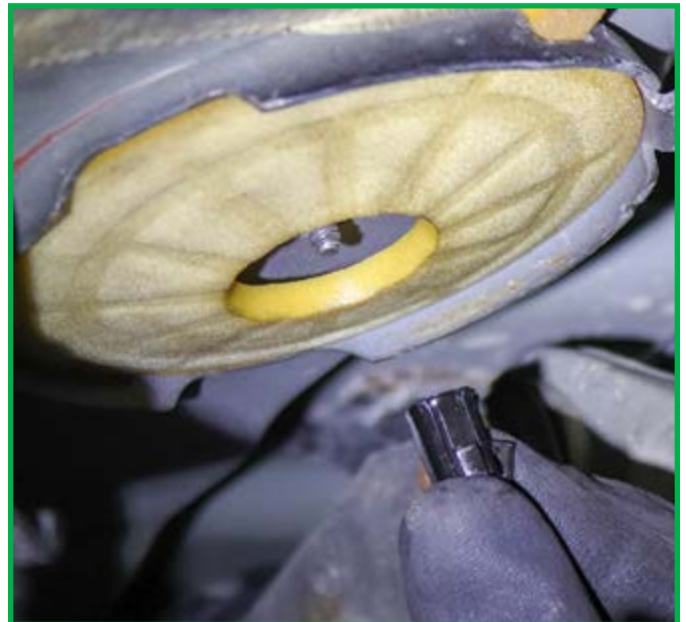


FIGURE 37

5. Identify the upper spring seat (Figure 38) and the lower spring seat (Figures 39).



FIGURE 38



FIGURE 39

6. When installing the upper spring seat, ensure the stud locates to the hole in the spring seat. (Figure 40)



FIGURE 40

7. Insert the lower spring seat into the lower spring pocket. Insert the spring and upper spring seat into the vehicle. (Figure 41)



FIGURE 41

8. Ensure that the spring ends are seated properly in the rubber spring isolators. (Figure 42)



FIGURE 42

9. Using an appropriate jack, carefully move the spring arm into trim height position. Install the lower sway bar link bolt and tighten to manufacturer's specifications. (Figure 43)



FIGURE 43

10. Install the spring arm to wheel knuckle bolt and tighten to manufacturer's specifications. (Figure 44)



FIGURE 44

11. Tighten the spring arm to subframe bolt to manufacturer's specifications. (Figure 45)



FIGURE 45

12. Position the new shock into the vehicle. (Figure 46)



FIGURE 46

13. Install the lower shock bolt. (Figure 47)



FIGURE 47

14. Install the upper shock nuts. (Figure 48)



FIGURE 48

15. Tighten all nuts and bolts to the manufacturer's specifications.

16. Rear coil spring and shock installation complete.

ELECTRONIC BYPASS MODULE (EBM) INSTALLATION

1. Pull back the carpet in the passenger side footwell to gain access to the kick panel. (Figure 49)



FIGURE 49

2. Remove the three (3) nuts retaining the kick panel. (Figure 50)



FIGURE 50

3. Locate the Air Suspension Control Module and remove the three (3) connectors. (Figures 51, 52)



FIGURE 51

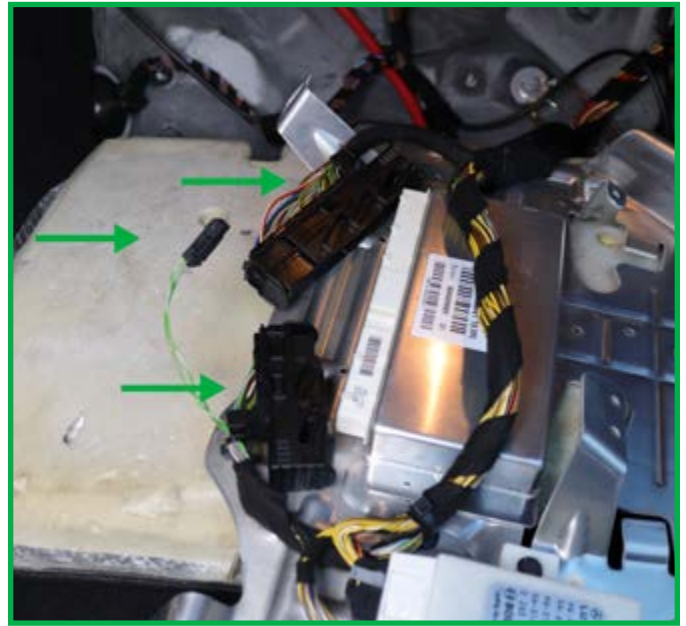


FIGURE 52

4. Locate connectors C1 (the larger connector) and C2 (the small two-pin connector).

5. Using the table below, splice the indicated EBM wires with yellow butt connectors to the indicated wires on connector C1. Splice the indicated EBM wires with red butt connectors to the wires indicated on connector C2. (Figures 53, 54)

	FROM	TO	CONNECTOR #	PIN #	
EBM HARNESS	Red	Red/White Stripe	C1	47	VEHICLE'S WIRING HARNESS
	Black	Brown	C1	21	
	Blue	Green/White	C2	H	
	Green	Green	C2	L	

FIGURE 53

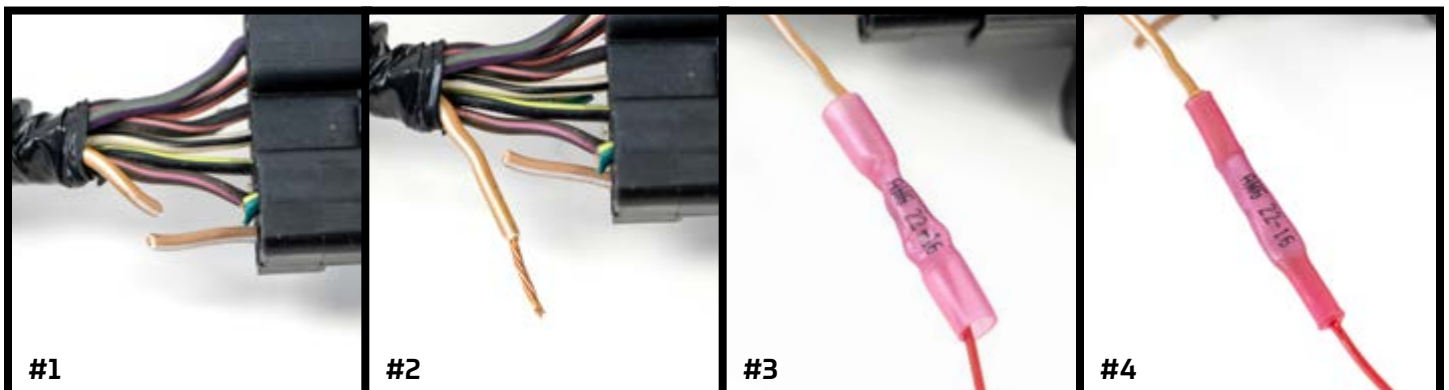
HEAT-SHRINK BUTT CONNECTOR INSTALLATION



BEFORE CUTTING

Verify you are working with the correct wires. Check the manufacturer's wiring diagram for your specific vehicle.

NOTE: Make all new connections to the **HARNESS SIDE**, not the connector side.



#1
IDENTIFY AND CUT THE APPLICABLE WIRE TO THE CONTROL MODULE.

#2
STRIP 10MM OF INSULATION WITH A SUITABLE TOOL. TWIST EXPOSED WIRE.

#3
INSERT THE WIRE INTO THE BUTT CONNECTOR AND CRIMP ACCORDING TO THE TABLE ABOVE.

#4
USE AN APPROPRIATE TOOL TO HEAT SHRINK.

FIGURE 54

6. Connect the EBM to the EBM harness. (Figure 55)



FIGURE 55

7. Secure the EBM in a suitable location, away from friction or pinch points.

NOTE: Do not plug the suspension control modules back in. They remain unplugged. There should be no suspension error lights present in the instrument cluster.

8. Reinstall the kick panel and carpet.
9. Installation complete.

**A 4-WHEEL ALIGNMENT
IS RECOMMENDED AFTER INSTALLATION**

Arnott™

Suspension Products

Arnott US Business Office:

www.arnottsuspension.com

100 Sea Ray Drive
Merritt Island, FL 32953

Call: 800.251.8993

321.868.3016

Fax: 321.868.3703

Email: techassistance@arnottinc.com

Arnott Europe Business Office:

www.arnotteurope.com

Industrieweg 19
5145 PD, Waalwijk (NL)

NL Phone: +31 73 7850 580

DE Phone: +31 85 2087 438

UK Phone: +44 203 3186 124

BE Phone: +32 258 846 90

ES Phone: +34 91 901 10 56

FR Phone: +32 78 48 46 93

Email: info@arnotteurope.com



HOW HELPFUL WAS THIS MANUAL?

Scan the QR code or click the link below to let us know.

<https://bit.ly/4sGAyQU>

NEED IMMEDIATE SUPPORT?

We're happy to help! Reach out using the contact information above.