

GMT 400/900 SERVICE BULLETIN



ATTENTION



Service Notice

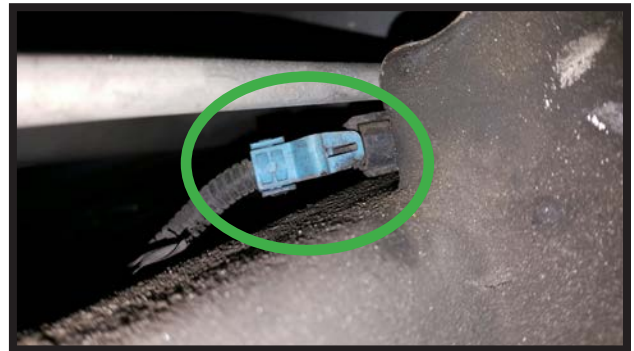


Service Notice

When replacing the rear shocks on these vehicles and accessing the upper shock mounting bolts, there is a high probability that the depicted blue electrical connection for the ABS wiring harness will come unplugged. When faced with this error message after performing a rear shock replacement, check their two connectors, located on each side of the vehicle, on top of the frame rail just behind the upper shock tower. Ensure the connections are good and restart the vehicle.



ABS Wiring Harness



ABS Wiring Harness

Arnett® is committed to the quality of its products. If you have a question or problem with any Arnett product, please contact Arnett by calling 800-251-8993 during normal business hours or email techassistance@arnottinc.com.
(In the EU please call +31 (0)73 7850 580 or email info@arnotteurope.com)