



# intAct Garden-Power

Maintenance-free lead-acid battery | wet charged

Art.No.

**52430SMF**

Japancode

U1(9)

Volt	12V
Capacity	24 AH (c20)
CCR -18°C (EN)	300 A (EN)
Electrolyte	diluted sulphuric acid
Electrolyte density	1,28 +/- 0,01 Kg/l (25°C)
Size (LxWxH)	196 x 130 x 184 mm
Weight	8,2 kg
Pos. of Terminal	1
Terminal	4
Base plate	-

## Usage



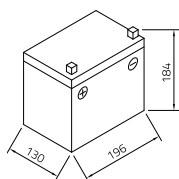
## Reliable through the garden year

Specially designed for use in lawn tractors and ride-on mowers, it copes well with uneven terrain. Maintenance-free and with low self-discharge, it starts reliably even after long periods of standstill. Our recommendation for riding mowers and municipal vehicles.

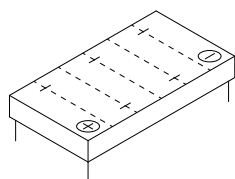
- » Wet charged. **Ready to use.**
- » **Increased leakage protection due to double lid.** Can also be installed at an angle.
- » **Maintenance-free lead-acid battery** without refilling.
- » **Extra shakeproof.**
- » **High cold start performance.**



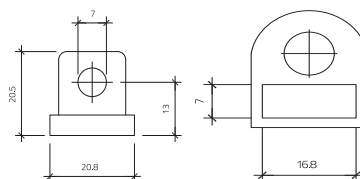
### Size



### Pos. of Terminal 1



### Terminal 4



### Base plate -

As of 26.08.2024