



intAct Garden-Power

Maintenance-free lead-acid battery | wet charged

Art.No.

52440SMF

Japancode

U1R(9)

| | |
|---------------------|---------------------------|
| Volt | 12V |
| Capacity | 24 AH (c20) |
| CCR -18°C (EN) | 300 A (EN) |
| Electrolyte | diluted sulphuric acid |
| Electrolyte density | 1,28 +/- 0,01 Kg/l (25°C) |
| Size (LxWxH) | 196 x 130 x 184 mm |
| Weight | 8,2 kg |
| Pos. of Terminal | 0 |
| Terminal | 4 |
| Base plate | - |

Usage



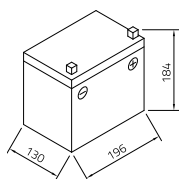
Reliable through the garden year

Specially designed for use in lawn tractors and ride-on mowers, it copes well with uneven terrain. Maintenance-free and with low self-discharge, it starts reliably even after long periods of standstill. Our recommendation for riding mowers and municipal vehicles.

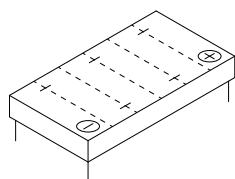
- » Wet charged. **Ready to use.**
- » **Increased leakage protection due to double lid.** Can also be installed at an angle.
- » **Maintenance-free lead-acid battery** without refilling.
- » **Extra shakeproof.**
- » **High cold start performance.**



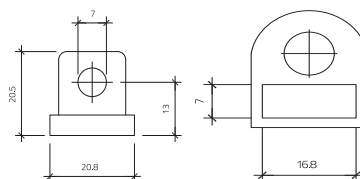
Size



Pos. of Terminal 0



Terminal 4



Base plate -

As of 26.08.2024